

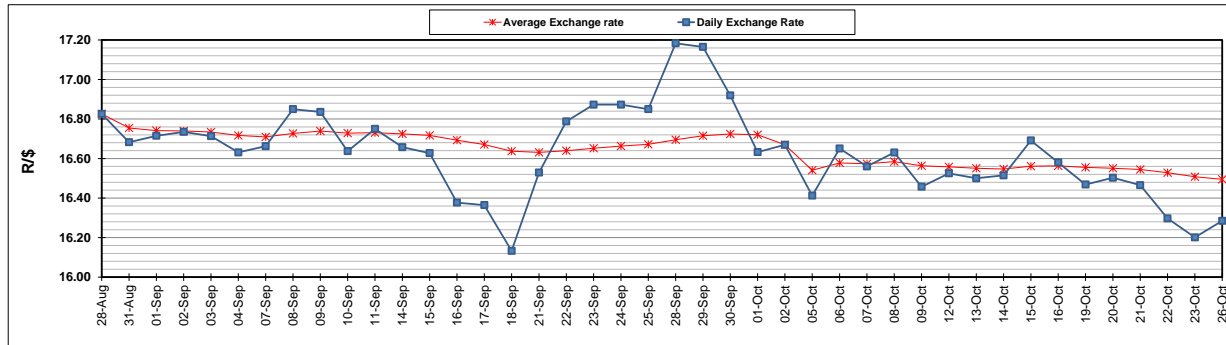
	PETROL 95 ULP	PETROL 93 ULP & LRP	DIESEL 0.05%	DIESEL 0.005%	ILL. PAR.
GAUTENG PUMP PRICE (SA c/l) AS FROM 07/10/2020	1,486.000	1,466.000	-	-	-
WHOLESALE PRICE (SA c/l) AS FROM 07/10/2020	-	-	1,237.560	1,238.960	640.828
SINGLE NATIONAL MAXIMUM RETAIL PRICE	-	-	-	-	798.000
BASIC FUEL PRICE - 26/10/2020 (SA c/l)	484.111	477.267	463.869	467.348	447.084
PRESS RELEASE CONTRIBUTION TO BFP 07/10/2020 - 26/10/2020 (SA c/l)	533.470	523.470	486.630	488.030	436.128
UNIT OVER/(UNDER) RECOVERY - 26/10/2020 (SA c/l)	49.359	46.203	22.761	20.682	(10.956)
AVERAGE BASIC FUEL PRICE 02/10/2020 - 26/10/2020	517.771	509.689	493.810	496.301	466.566
AVERAGE UNIT OVER/(UNDER) RECOVERY 02/10/2020 - 26/10/2020	21.346	17.840	8.702	8.141	(17.026)

ANALYSIS MOVEMENT OF AVERAGE OVER/(UNDER) RECOVERY

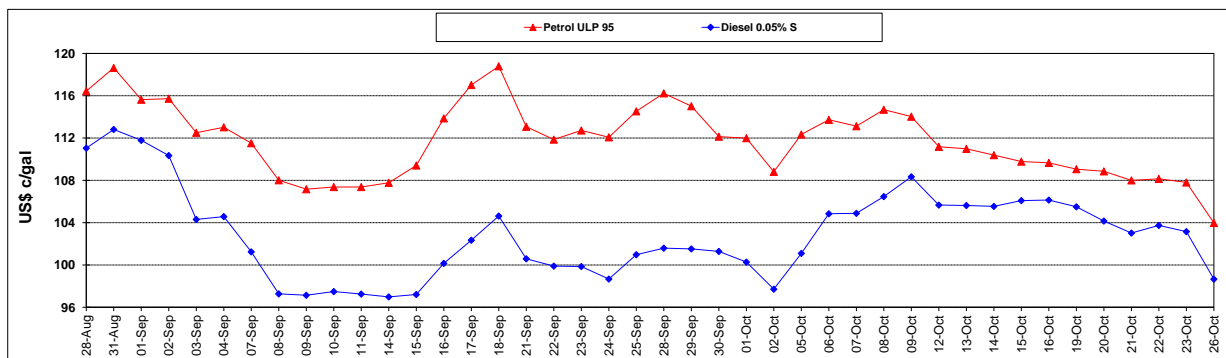
	PETROL 95	PETROL 93	DIESEL 0.05%	DIESEL 0.005%	ILL. PAR.
- MOVEMENT IN INTERNATIONAL PRODUCT PRICES	14.264	10.869	1.948	1.353	(23.407)
- MOVEMENT IN EXCHANGE RATE	7.082	6.971	6.754	6.788	6.381
AVERAGE UNIT OVER/(UNDER) RECOVERY 02/10/2020 - 26/10/2020	21.346	17.840	8.702	8.141	(17.026)

R/\$ EXCHANGE RATE - (R/\$16.2848 - 26/10/2020)

EXCHANGE RATE USED IN BASIC FUEL PRICE



INTERNATIONAL PRODUCT PRICES OF BASKET USED IN BASIC FUEL PRICE



BASIC FUEL PRICE IN SA CENTS PER LITRE

